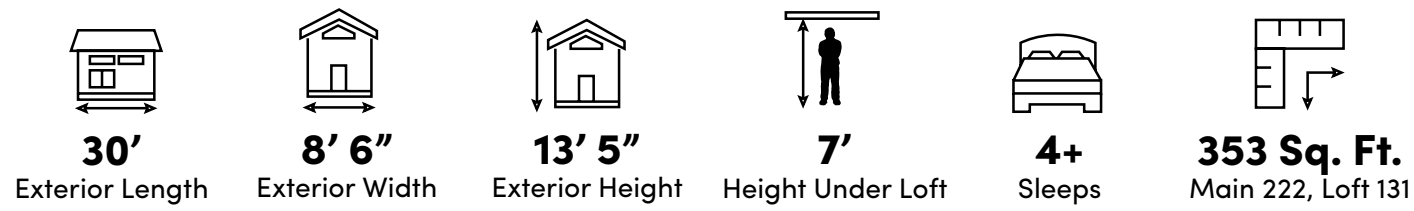
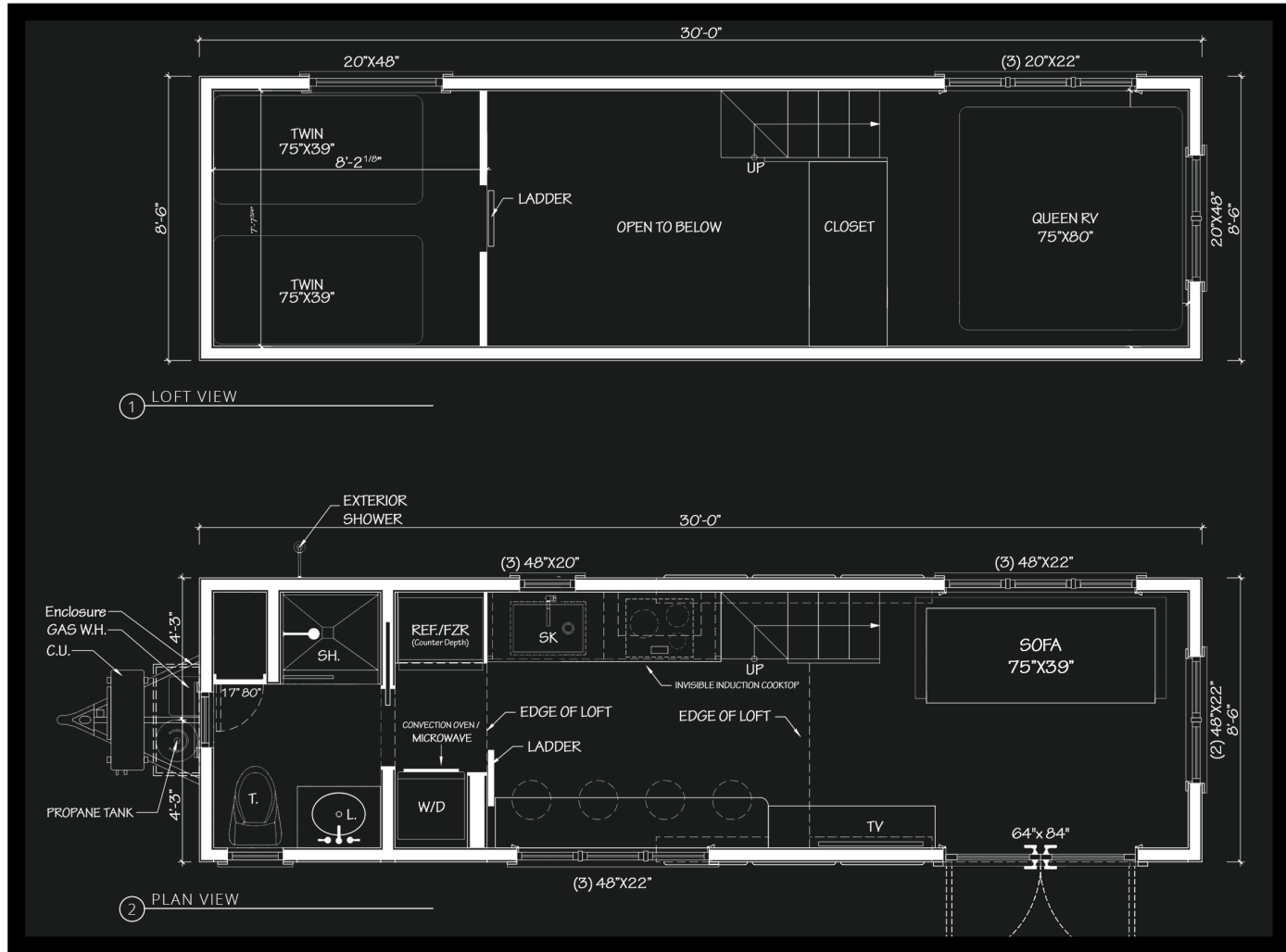


The Aspen



TinyDream
HOMES

Let's Plan Your **TinyDreamHOME**.

TinyDreamHOMES.com
1-877-GO-4-TINY



All Homes Certified By:



The general information contained herein is informational only and is not intended to be relied upon as a representation of all aspects of TinyDreamHOMES. TDH reserves the right to change without notice any of the specifications, dimensions, appliances, equipment, features, pricing, and materials in its sole discretion due to changes in manufacturing, design, availability of parts and materials, pricing, product specifications, or such other reasons.



TinyDream
HOMES



The Aspen

Built for Comfort, Designed for Adventure.

TinyDreamHOMES.com



Two Sleeping
Lofts

Impact
Resistant
Insulated
Windows

Built in
Bar/Desk

Heated
Bathroom
Floors

Porcelain-
tiled Shower

Invisible
Induction
Cooktop

Built-in
Dog Bowls

Farmhouse
Style

Why Choose The Aspen?

The 30' Aspen is a Tiny Dream HOME for a family who loves the outdoors. Whether you're heading for the mountains or spending time by the sea, The Aspen will be your home away from home.

Cook your favorite family recipes in a luxury kitchen with solid surface countertops, a full-sized refrigerator and spacious freezer, an Invisacook 3 induction cooktop, and an LG TurboCook™ Speed Oven with with Air Fryer and Microwave. The bar seats up to four, and also conveniently doubles as a desk.

The main living area maximizes space with clever storage cabinets for all your gear. A spot for a large TV is ideal for watching the big game, enjoying a movie, or even gaming for the kids. Your spa-like bathroom includes a beautiful walk-in shower with porcelain tile and a 30" vanity. Enjoy the outdoor shower for washing sandy feet. The primary sleeping loft is designed for a queen bed, and the other loft houses two twin beds. A sleeper sofa could expand your hosting capabilities!

Built with Luxury. Backed by Warranty.

Home Certification

Tiny Dream HOMES are dual inspected by NOAH to both the 2023 NOAH+ standard and 2023 NOAH Dwelling Standard which includes ANSI 119.5, NFPA 70 (NEC) and 2018 IRC (International Residential Code, including Appendix AQ). Additionally, the NOAH Dwelling Standard requires and inspects for provisions per the following stipulations of AWC and APA codes.

Home Warranty

One-year limited warranty on workmanship. Pass through warranties on appliances and certain materials.

Key Features of The Aspen

Kitchen Appliances

Efficient full-size stainless refrigerator, Invisacook induction cooktop, turbo speed oven with built-in air fryer and microwave.

Kitchen Cabinetry

Custom-built flat panel cabinets with pre-finished wood interiors & matte black hardware.

Kitchen Countertops

3/4" solid surface Dekton® countertops with backsplash. Matte black faucet & undermount stainless sink.

Master Bath

Walk-in shower with porcelain tile, 30" vanity cabinet with solid surface counter & heated floors.

Heating/Cooling

18,000 BTU energy-efficient ductless mini-split A/C and heat pump.

Laundry

Versatile LG WashCombo™ All-in-One 5.0 cu. ft. Mega Capacity Ventless Washer/Dryer with Inverter HeatPump™ Technology.

Off-grid Solar Package (optional)

Conduit is pre-installed for easy installation of an optional Solar Package, which includes a propane cooktop and incineration toilet.

Floors

7-1/2" wide Weathered Oak engineered wood floors.

Windows

ES Windows Prestige® Line casement and fixed aluminum windows with thermally-broken, insulated, impact-resistant glass.

Outdoor Conveniences

An outdoor shower and a 60" Girard® awning for protection from the elements.

*Specifications subject to change due to availability and pricing